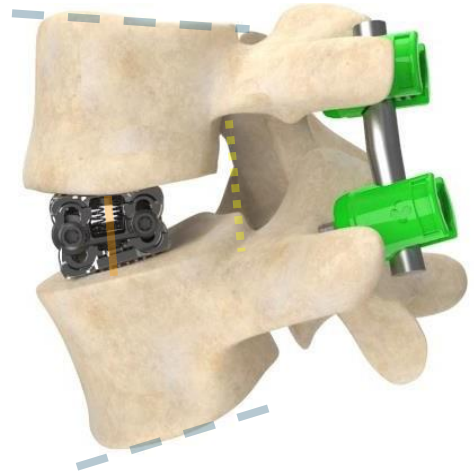


Focused on **highly differentiated precision** technologies and surgical techniques for achieving **Patient-Specific Results** that are **intuitive, efficient, minimally disruptive, and economical**

Sagittae[®] Adjustable Expandable Interbody



Maximize Surgical Efficiencies

- Single instrument for *in-situ* height and lordotic adjustments
- Inserter interface providing optimal visualization, real-time visual and tactile feedback during adjustment steps
- Fully adjustable technology reduces implant sizing and selection steps
- Control distraction and configure implant in same surgical step

Patient-Specific

- 8+ mm of *In-situ* parallel expansion within a single device
- Precise independent posterior and anterior adjustment capabilities *In-situ* for achieving **Sagittal Balance Correction** specific to each patient through ability to optimize:
 - Intervertebral disc height restoration
 - Lordosis (up to 30°*)
 - Surface area contact with vertebral endplates
- Independent posterior adjustment option for indirect decompression needs



Minimize Patient Post-Operative Complications

- Minimal implant starting size through lateral MIS approach
- In-situ adjustability minimizes vertebral body and end plate disruption
- Dual-handle Inserter Instrument option offering provides quicker implant adjustments in less surgical steps
- Reduced trialing steps and time necessary during implant sizing

Streamline Inventory

- Only x5 unique implant footprints required in the operating room- all with full adjustment range capabilities
- Provided sterile and pre-packaged

The Sagittae® Lateral Lumbar Solution- A differentiated technology and unique surgical technique bringing multiple clinical and surgical benefits to each surgery.

Available in the Following Sizes and Configurations:



Sagittae® Lateral Lumbar Interbody Fusion Device Family				
Length (mm)	Width (mm)	Height Range (mm)	Lordosis Range* (°)	Bone Graft Volume (cm³)
42.0	21.5	8.4-17.1	0-30	1.3-10.9
46.0	21.5	8.4-17.1	0-30	1.5-11.9
50.0	21.5	8.4-17.1	0-30	1.7-13.0
54.0	21.5	8.4-17.1	0-30	1.9-14.0
58.0	21.5	8.4-17.1	0-30	2.1-15.1

A 2-degree-of-Freedom Technology: allows for unmatched surgical precision, providing personalized corrections and optimal bone graft delivery for each patient

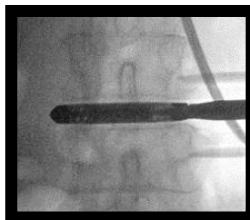


Fig 3: Minimal insertion starting height reduces impaction forces

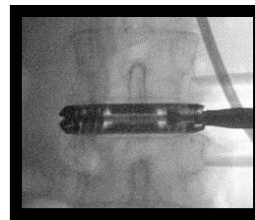


Fig 4: 8+ mm of full independent and/or simultaneous anterior and posterior height adjustability in-situ



Fig 5: Achieve desired final Sagittal balance restoration and indirect decompression unique to each patient's needs

Fig 1: ONLY 5 UNIQUE DEVICE footprints required, all with same height, lordosis, and bone graft volume configuration options above

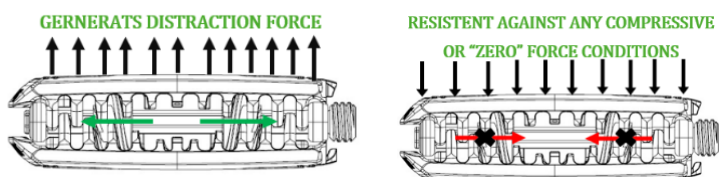


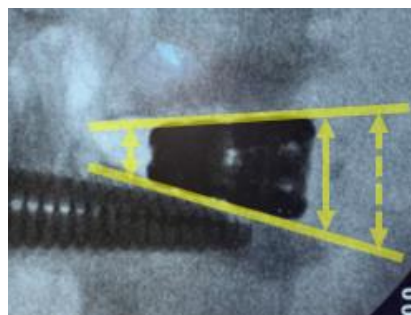
Fig 2: A robust design allowing for controlled distraction while remaining SELF-LOCKING at any level of added height and/or lordosis. NO secondary lock mechanism or extra step required to hold the adjusted configuration. Easily re-adjustable if desired.



Fig 6: Open Architecture design allowing for optimal bone graft delivery with option of pre and/or post packing of device *In-Situ*

Sagittae® System Instrumentation Highlights: A fully comprehensive set to bring surgical precision and efficiency while providing an intuitive interface during operation.

- **Lateral 3-Blade Retractor System and Discectomy:** 90-170 mm blade length options, light weight body, intuitive user interface, 360° directional EMG neuromonitoring dilator set, LED lighting and multiple shim styles options available depending on preference. Bayoneted, straight, and angled discectomy and end plate preparation instrument choices available for various surgical preferences.
- **Implant Sizing, Insertion and Graft Delivery Set:** Unique Inserter available in x2 configurations to accommodate various application and technique preferences, full range of trials, multiple reusable and disposable in-situ bone graft delivery options allowing for quick post-filling.



These devices are intended to be used with supplemental fixation systems that have been cleared for use in the lumbosacral spine (e.g., posterior pedicle screw and rod systems, anterior plate systems, and anterior screw and rod systems). Hyperlordotic interbody devices ($\geq 20^\circ$ lordosis) must be used with at least anterior supplemental fixation.

Please refer to package insert for a detailed device description, indications, contraindications, warnings, precautions, and other important information.

© 2021 Sagittae® is a registered trademark of Adcura, Inc. Adcura™, Adcura Spine™, and Precise Patient Solutions are trademarks of Adcura, Inc.

OMK-030-55 (D)

For more information about Sagittae®, please contact your local Adcura™ representative or email: info@adcuraspine.com



Adcura™, Inc.
 PRECISE PATIENT SOLUTIONS
 11010 Prairie Lakes Drive
 Eden Prairie, MN 55344
 +1 (952) 400-0407
www.adcuraspine.com